

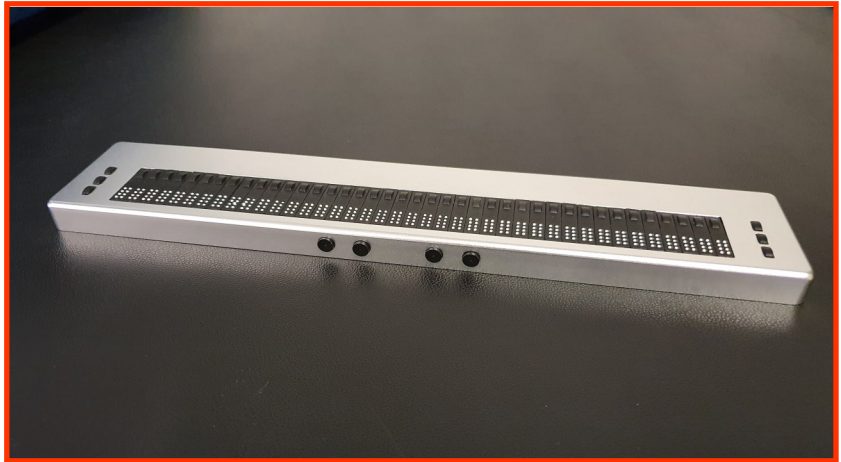
metec

INGENIEUR - AKTIENGESELLSCHAFT · MEDIZINTECHNIK · FEINWERKTECHNIK

Braille-Display

BD III 40

Description



The BD III 40 is a new and versatile Braille Display which allows the Blind to work with Personal Computers and the internet. Its rugged casing and compact size are designed for heavy daily use. The BD III 40 USB can open new educational frontiers and job opportunities for the Blind. The Unit is made in Germany

Data

Dimensions (w x d x h):	314 x 61 x 15
Number of Cells:	40 (32, 20)
Dot stroke:	ca. 0.7 mm
Cell spacing:	6.42 mm
Tactile force:	min. 17 cN
Weight:	approx. 445grams

Spezifikation

New high-tec Braille technology with low power & ultra compact PIEZO cell blocks

Braille cells : 40 cells units for text display

Routing buttons integrated into all 40 Braille cells

Modern electronic system with USB interface (Ver. 2.0) for easy installation

Internal power supply via USB interface – no external power supply required

10 Function keys for left and right hand users

full metal case with black anodised aluminium surface

alternative Types

BD III 20	20 Braille cells
BD III 32	32 Braille cells

Page 1 of 2

Q02 BD III-1

Braille-Display

BD III 40

Data

Connector: Usb C for Power supply and data handling

Drive electronic: Low-power electronic
Power requirements: 5 V+5%; max. 450mA
Dot rising time: 50ms
Average piezo actuations: > 10

Environmental Specifications:

Operational: Temperature 10 °C to 40°C
Humidity 10 % - 70 % RH
non condensing

Storage: Temperature -15 °C to 60 °C
Humidity 5 % - 90% RH
non condensing

Accessories: connecting cable

Specifications are subject to change without notice.